

Our associates will ensure the tool works properly before you leave the store. If you experience issues with the tool while completing your project, simply bring it back to the Tool Rental Center to get a replacement. If you purchase Damage Protection at the time of your rental, you are not responsible for repair costs for tools that break due to normal use.





Operating Instructions and Parts Manual Winch Stacker

Model JWS-770A



JET
427 New Sanford Road
LaVergne, Tennessee 37086
Ph.: 800-274-6848
www.jettools.com

Part No. M-140511
Revision A2 06/2014
Copyright © 2014 JET

2.0 Table of contents

Section	Page
2.0 Table of contents.....	3
3.0 About this machine and manual.....	3
5.0 Specifications.....	5
6.0 Setup and assembly.....	6
7.0 Operation.....	6
8.0 Maintenance.....	6
8.1 Carriage/Roller Alignment.....	6


3.0 About this machine and manual

Your winch stacker is designed to prevent lifting injuries by providing a stable, mobile lifting device for moderate to heavy loads. It is ideal for use in confined areas or narrow aisles. The stacker is easy to operate with an adjustable length winch handle, braking system, smooth rolling, long lasting nylon load wheels, and caster locks.

This manual is provided by JET covering the safe operation and maintenance procedures for the JET Model JWS-770A Winch Stacker. This manual contains instructions on installation, safety precautions, general operating procedures, maintenance instructions and parts breakdown. Your machine has been designed and constructed to provide years of trouble-free operation if used in accordance with the instructions as set forth in this document.

If there are questions or comments, please contact your local supplier or JET. JET can also be reached at our web site: www.jettools.com.

Retain this manual for future reference. If the stacker transfers ownership, the manual should accompany it.

 **WARNING Read and understand the entire contents of this manual before attempting assembly or operation! Failure to comply may cause serious injury!**



4.0 Safety warnings

1. Read and understand all warnings and operating instructions before attempting to use the winch stacker.
2. Replace warning labels if they become obscured or removed.
3. Do not exceed rated capacity. Excessive load can cause tipping or loss of control.
4. Do not exceed load center capacity of stacker. Load center is measured horizontally from back of forks or platform. See *Figure 1*. Load center (A) is 18" on the JWS-770A Stacker.
5. Overall length of load must never be more than twice the load center capacity.
6. Do not allow anyone to sit or ride on fork, or enter area beneath forks.
7. Always keep fingers, hands and feet clear of forks and mast when lowering load.
8. Always secure load before raising or moving the stacker.
9. Do not allow more than half of load to extend beyond load center.
10. Always keep load close to mast.
11. Do not transport load in raised position.
12. Use on level, smooth, finished floors only. Do not use on uneven or sloping floors.
13. Always rotate winch handle slowly to allow load to descend in a controlled and cautious manner.
14. Always use genuine factory replacement parts only.
15. Do not operate stacker if cable is worn, frayed or damaged in any way; have it repaired immediately.
16. Failure to comply with all of these warnings may result in tipping, loss of control and load, damage to winch stacker, personal injury and/or property damage.

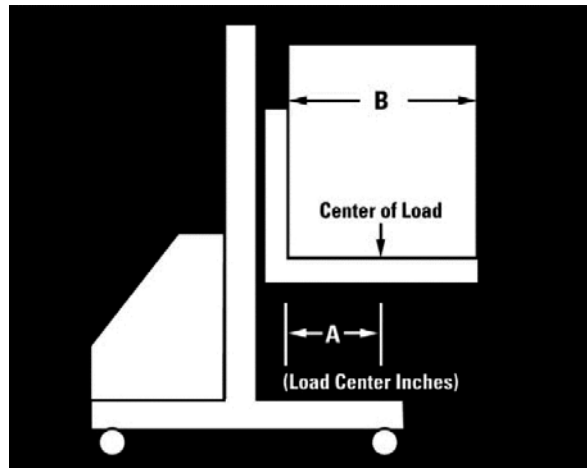


Figure 1

Familiarize yourself with the following safety notices used in this manual:

CAUTION This means that if precautions are not heeded, it may result in minor injury and/or possible machine damage.

WARNING This means that if precautions are not heeded, it may result in serious injury or possibly even death.

5.0 Specifications

Model number JWS-770A
Stock number 140511

Capacities and forces:

Load capacity770lb (350kg)
Pallet capacity 48" x 40" (1219 x 1016mm)
Load center 18" (457mm)
Maximum lift height 59" (1499mm)
Handle rotations to maximum height..... 33
Handle force required at maximum load.....35 lb (16kg)
Turning radius 360°/31" (788mm)

Dimensions:

Fork size 36"L x 3"W x 1-3/4"H (914 x 76 x 44.5mm)
Minimum fork height 3" (76mm)
Overall fork width (min./max.)6-3/8" / 30" (162 / 762mm)
Outrigger width 2-3/8" (60mm)
Outrigger height 2-3/8" (60mm)
Outrigger inside width (min./max.)33-1/2" / 49-1/2" (850 / 1257mm)
Outrigger outside width (min./max.) 39" / 55" (990 / 1500)
Wire rope diameter 13/64" (5mm)
Overall size 52"L x 39-1/2"W x 73"H (1320 x 1003 x 1854mm)
Height of center of hoist case 45" (1143mm)

Wheels:

Load wheel material and sizeBlack nylon / 3-1/4"OD x 2"W (83 x 51mm)
Caster material and size Bakelite / 6"OD x 1-1/4"W (153 x 32mm)
Caster locksyes

Net weight266 lb (121kg)
Shipping weight296 lb (134kg)

The specifications in this manual were current at time of publication, but because of our policy of continuous improvement, JET, reserves the right to change specifications at any time and without prior notice, without incurring obligations.

6.0 Setup and assembly

1. Remove all packing material from the stacker.
2. Locate the winch handle assembly that has been reversed for shipping purposes. Loosen the nut (A, Figure 2) and pull handle (B, Figure 2) from the base (C, Figure 2). Reverse the handle and install into base as shown. Tighten nut (A, Figure 2).

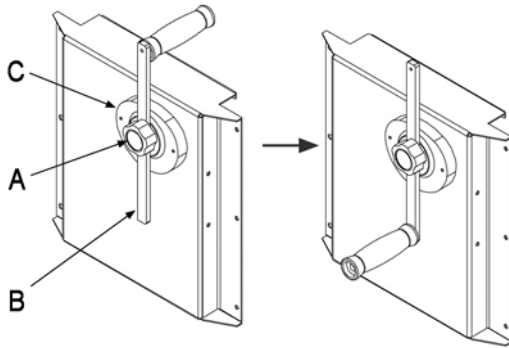


Figure 2

3. To assemble forks, unscrew socket head flat screw (#45, page 7). Tap fork shaft out (#48, page 7). Forks to be assembled must come from same crate as the mast.
4. Align holes in forks (#46, page 7) with holes in carriage (#47, page 7) and tap fork shaft through carriage and fork holes.
5. Be sure assembled forks are even and parallel. Reinstall socket head flat screw in carriage to hold fork shaft in place.
6. To assemble outrigger legs, check to be sure that the legs to be assembled come from the same crate as the mast.
7. Insert outrigger legs (#13L and #13R, page 7) into square holes located in bottom of mast (#8, page 7). Align holes in legs with holes in mast to enable legs to be equal distance from mast.
8. Fasten legs to mast with 4 hex cap screws (#16), 4 lock washers (#15) and 4 hex nuts (#14, page 7). Tighten hex nuts firmly.

⚠ WARNING Do not overload the stacker. Use on finished, smooth and level floors only. Do not use on sloped or uneven floors.

7.0 Operation

1. Insert both forks evenly and completely under load. Load must be distributed equally on both forks and toward the mast. Do not allow more

than half the load to extend beyond load center. Do not lift load with fork tips only and do not lift unstable or loose load.

2. Turn winch handle clockwise to raise load. When forks reach maximum height, the winch will stop. Do not exceed maximum lifting height.
3. Use both hands with a firm grip to push and steer the stacker on level, smooth finished floors only. Keep all people clear from stacker while lifting and transporting load.
4. To lower load, carefully turn handle counter-clockwise to enable load to lower in a cautious manner.

⚠ CAUTION When not in use, do not allow heavy loads to remain on the forks for an extended period of time.

8.0 Maintenance

For optimum performance, the drive chain (#37, page 9) located inside the drive assembly should be lubricated regularly with chain oil.

Frequently check condition of wire rope (#1, page 7). Apply a penetrating wire rope lubricant as needed to protect and extend the service life of the rope. If wire rope has become dirty or acquired other contaminants, clean with a wire brush and kerosene, allow to dry, then immediately (to prevent rusting) apply wire rope lubricant.

Always store the winch stacker without load, and forks in lowest position.

8.1 Carriage/Roller Alignment

If the forks ever become misaligned, adjust the side roller assemblies as follows (Figure 3):

1. Tighten screw (D) to secure Side Roller Bracket (A) in position with carriage side plate.
2. Shift Bracket (A) by hand to keep it parallel to Mast assembly.
3. Loosen nut (C) and turn screw (B) to shift Bracket (A) in or out as needed. Repeat this with top and bottom screws at both sides of frame.
4. Rock carriage sideways to confirm proper spacing/tightness, and make any further adjustments as needed.
5. When satisfied, tighten all nuts (C).

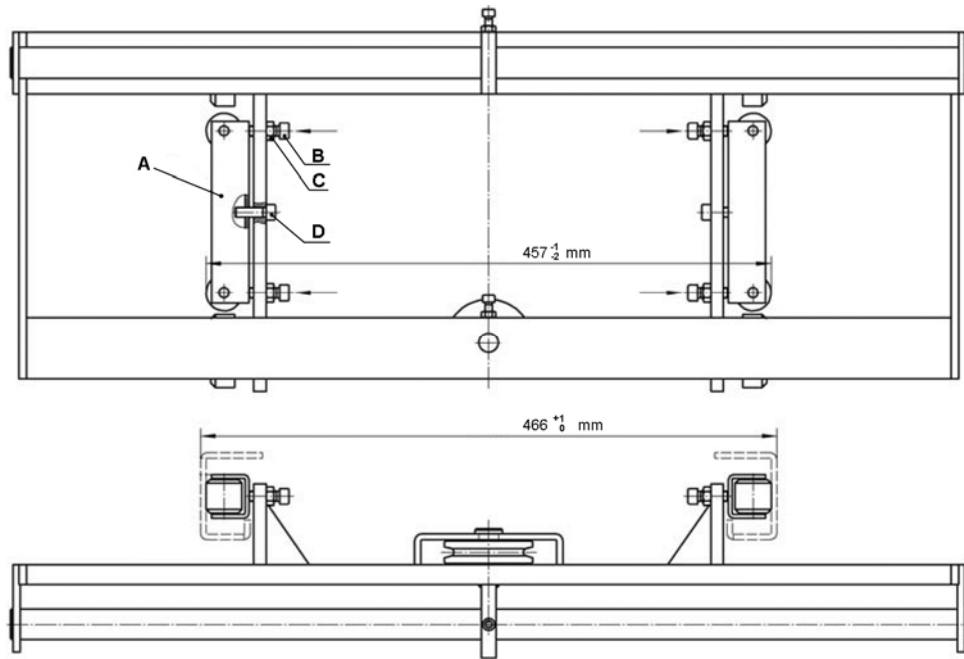


Figure 3